



# PUBLIC NOTICE

US Army Corps  
of Engineers  
St. Louis District

**Sponsor:** Shaw Nature Reserve  
P.O. Box 38  
Gray Summit, Missouri 63039

Issued: October 24, 2024  
Expires: November 23, 2024

**Corps Project Number:** CEMVS-RD-2024-0376  
**Proposed Project:** Shaw Nature Reserve Wetland Bank Additions

---

## WETLAND COMPENSATORY MITIGATION BANK PROPOSAL Public Notice: St. Louis District

This notice is issued in accordance with the Compensatory Mitigation for Losses of Aquatic Resources; Final Rule (the Mitigation Rule) described in the Federal Register dated April 10, 2008 (33 CFR Parts 325 and 332). The St. Louis District shall utilize the Ozark-Meramec Ecological Drainage Unit (EDU) Service Area for this bank proposal. This service area will provide mitigation options for applicants within the District.

1. **Project Location:** The proposed site is located within Section 17, Township 43 North, Range 2 East Franklin County, Missouri. See attached location maps. Latitude: 38.4733 Longitude: -90.8172.

2. **Bank Objectives:** The fundamental objective of compensatory mitigation is to offset environmental losses resulting from unavoidable impacts to waters of the United States authorized by Department of Army Permits, through the means of selling wetland mitigation credits for projects developed by other entities. The main goals of the project are to restore two emergent wetland areas, enhance existing wetland ponds and wetland buffer, improve water quality, and provide wildlife habitat and aesthetic value to local residents.

3. **Project Description/Bank Establishment:** The proposed Shaw Nature Reserve Wetland Bank Additions involve creation, restoration, and rehabilitation of wetland and grass buffer, to provide enhanced water quality and wildlife habitat. The proposed wetland bank additions would rehabilitate 25.82 acres of wetland and establish 65.03 acres of buffer, to generate an initial estimate of 138.18 wetland credits. The bank sponsor proposes to utilize wetland mitigation methods to aid in improving habitat through improvements to the bottomland and riparian buffer, which includes native plantings and vegetation management to remove invasive species and promote native species diversity. A wetland delineation was completed in July of 2023.

4. **Service Area:** The proposed primary bank service area will be the Ozark-Meramec EDU Service Area, which includes only the St. Louis District.

5. **Bank Need/Technical Feasibility/Ecological Suitability:** Historical credit sales from private mitigation banks and in-lieu fee programs, as well as historical impacts to streams and wetlands, reveal a large historical need for mitigation credits in the Ozark- Meramec EDU Service Area. Today, there are two approved private wetland mitigation banks in the service area. Additionally, coordination with public agencies reveal a need for mitigation credits in the service area going forward for large projects. The sponsor believes that the proposed Bank site is suitable for mitigation activities, and the likelihood of this site being successful is high. The bank is located within the lower Meramec River region that has experienced increased degradation through residential development, levee construction, septic system discharge, and loss of riparian and wetland habitat. A majority of the land development has been in St. Louis County, eastern Franklin County and western Jefferson County. This development has had an impact on the extent and quality of wetland and wildlife habitat. The lower Meramec is highly affected by the growing amount of impermeable surfaces causing increased surface water flows and erosion, and by water pollution from point and non-point sources. The middle and upper Meramec are threatened by agricultural conversion, nutrient and sediment runoff, and livestock damage.

6. **Long Term Management:** The Sponsor or a designated maintenance contractor would perform annual maintenance during the life of the Bank. Upon closure, the bank will be in satisfactory condition. The bank shall be preserved in perpetuity with a conservation easement, approved by the USACE. The proposed Bank would be continuously managed by a

contractor or landowner. Long-term management efforts would include maintaining vegetation within the riparian buffer and ensuring that the wetland restoration features remain stable.

**7. Sponsor Qualifications:** The sponsor has a long history of natural habitat restoration and construction and is experienced with the development, construction and management of wetlands and the natural habitats associated with them. An excerpt from the Shaw Nature Reserve's visitor guide is included below.

*"In 1925 the Missouri Botanical Garden purchased five adjoining farms to create a safe haven from the dangerous smog of St. Louis for the Garden's renowned orchid collection. Since the 1970s Shaw Nature Reserve has become an area leader in restoration ecology, native plant horticulture, and environmental education. The Reserve's restored prairies, wetlands, glades, woodlands, and the Whitmire Wildflower Garden provide a unique laboratory for education programs and exploration of the natural world."*

Shaw Nature Reserve has been restoring native habitats on the property since 1979. Approximately 75% of the sponsor's 2,400 acres are currently set aside as "Native Habitat Area" and are managed to favor native biodiversity. The Habitats represented include glades, prairies, wetlands and woodlands. The goal of ecological restoration at Shaw Nature Reserve is the creation of rehabilitation of a mosaic of habitats that can support healthy populations of the maximum possible number of plant and animal species native to the St. Louis region. The sponsor has selected the Bank site additions based on its current condition which is in a stable, but degraded state, is in proximity to the Meramec River, has high potential for establishment and restoration of the stated resources, is aligned with the watershed plans for Missouri Department of Conservation's Watershed Inventory and Assessment Plan and the Lower Meramec Greenway Plan, as well as the sponsor's mission of native habitat restoration and establishment.

**8. Water Rights:** Shaw Nature Reserve currently owns the property associated with the bank proposal. The sponsor would not have complete control of upstream practices that may alter flows to the project area.

**9. Agency Review:** Corps of Engineers. The Corps of Engineers is participating in this matter as the chair of an Interagency Review Team. The Interagency Review Team consists of the Corps of Engineers (St. Louis), the U.S. Fish and Wildlife Service, the U.S. Environmental Protection Agency, the Missouri Department of Conservation, and the Missouri Department of Natural Resources. The project would require Section 404 of the Clean Water Act authorization prior to the proposed construction. If approved, the proposed bank could provide stream credit for future, Section 404 authorized projects that require compensatory mitigation. Formal authorization of the bank proposal occurs through Corps approval of a Mitigation Banking Instrument.

**10. Historical/Archaeological:** The District has notified the Sponsor that a Phase 1 Cultural Resources Survey will be required. Once the survey is received, the District Archaeologist will review the report and coordinate the report with the Missouri State Historic Preservation Office and Native American tribes that have expressed an interest in the location of the project.

**11. Endangered Species:** District staff performed a preliminary review of potential threatened and endangered species using the USFWS IPaC website on October 21, 2024. IPaC (2025-0008457) listed these species based on the project location: endangered Gray Bat (*Myotis grisescens*), Indiana Bat (*Myotis sodalis*) Northern Long-eared Bat (*Myotis septentrionalis*); proposed endangered Tricolored Bat (*Perimyotis subflavus*); endangered Eastern Hellbender (*Cryptobranchyus alleganiensis alleganiensis*), endangered Pink Mucket (*Lampsilis abrupta*), Scaleshell Mussel (*Leptodea letodon*), Sheepnose Mussel (*Plethobasus cyphus*), Snuffbox Mussel (*Epioblasma triquetra*), Spectaclecase Mussel (*Cumberlandia monodonta*), proposed endangered Salamander Mussel (*Simpsonaias ambigua*) and candidate Monarch Butterfly (*Danaus plexippus*). This proposal will be reviewed by the U.S. Fish and Wildlife Service. Any comments USFWS has concerning Federally listed threatened or endangered wildlife or plants, or their critical habitat, will be considered in the Corps' final assessment of the described work.

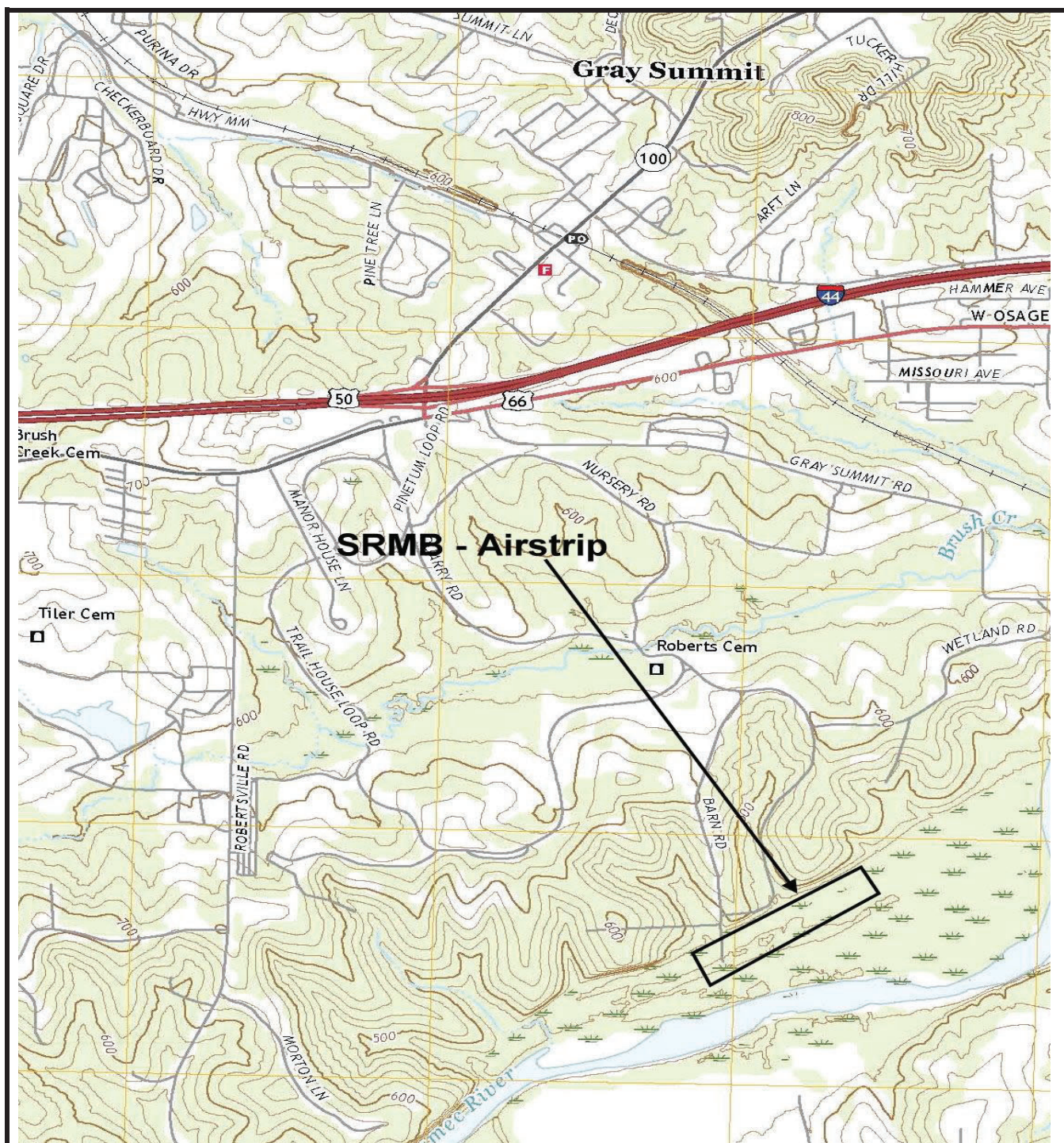
**12. Who Should Reply:** The Corps of Engineers is soliciting comments from the public; Federal, state, and local agencies and officials; Indian Tribes; and other interested parties to consider and evaluate the impacts of this proposed activity. Any comments received will be considered by the Corps of Engineers to determine whether to approve the proposed bank. Any comments received will be distributed to the members of the Interagency Review Team. Comments should be submitted on or before the expiration date specified at the top of page 1. Comments should bear upon the adequacy of plans and suitability of locations and should, if appropriate, suggest any changes considered desirable. Any person may also request a public hearing. The request must be submitted in writing to the District Engineer within the designated comment period of the notice and must state the specific reasons for requesting the public hearing.

13. **Reply to the Corps of Engineers:** Comments or questions concerning this notice may be directed to David P. Meyer via phone (314/331-8810), email (David.p.meyer@usace.army.mil), or by writing to the following address: US Army Corps of Engineers, St. Louis District, ATTN: David P Meyer-RD, 1222 Spruce Street, St. Louis Missouri 63103.

14. **Complete Prospectus:** The complete prospectus can be found on our public website at:  
[https://ribits.ops.usace.army.mil/ords/f?p=107:278:3572413954714:::P278\\_BANK\\_ID:6955](https://ribits.ops.usace.army.mil/ords/f?p=107:278:3572413954714:::P278_BANK_ID:6955)  
Hard copies are also available by request.

David Meyer  
Missouri Project Manager  
Regulatory Division





## SRMB – Airstrip

Franklin County, MO

On-Site Soils

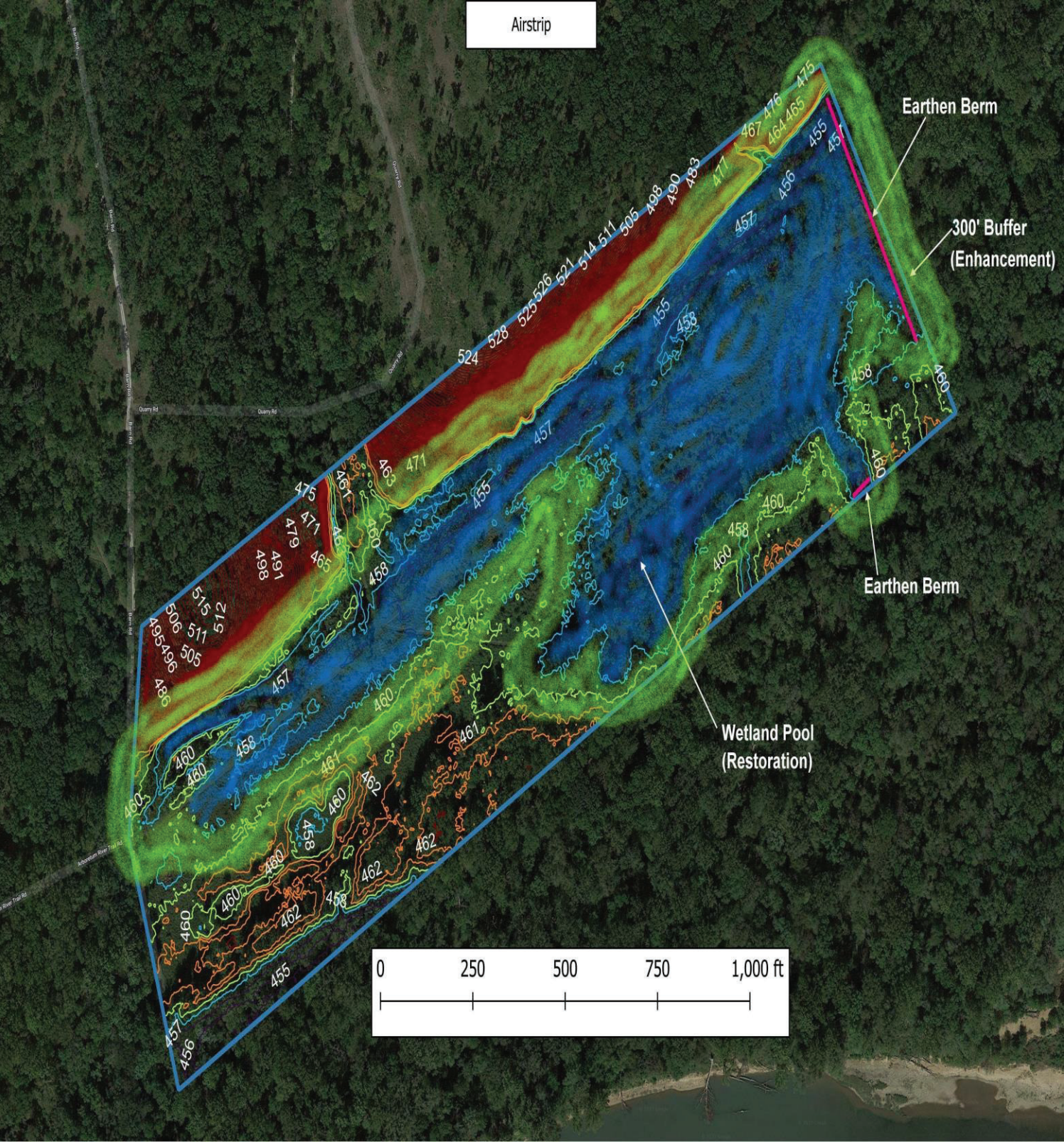
Source: USGS

Figure 1  
USGS Map

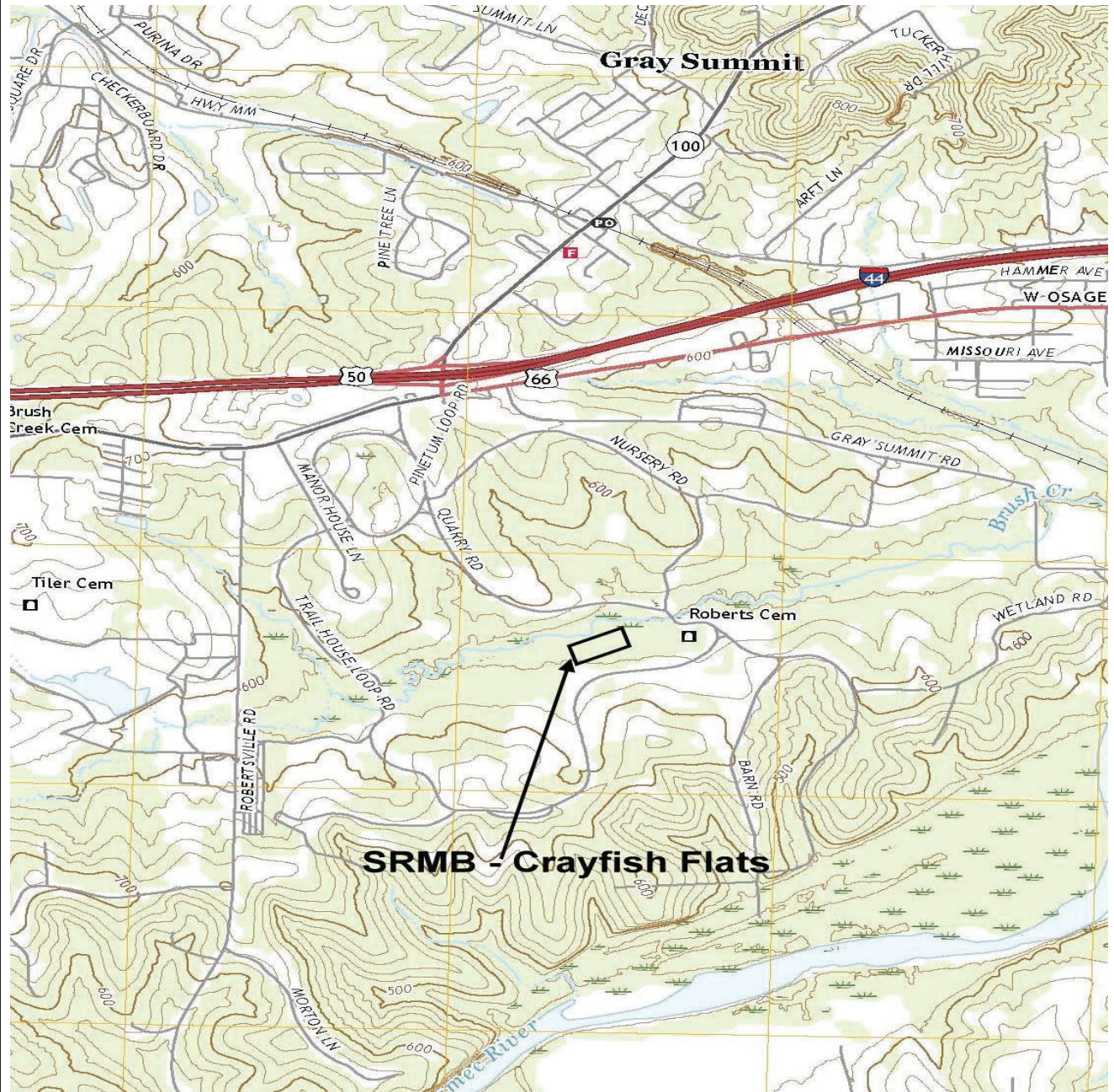


Scale:  
NOT TO SCALE









# SRMB – Crayfish Flats

Franklin County, MO

Figure 1

USGS Map



On-Site Soils

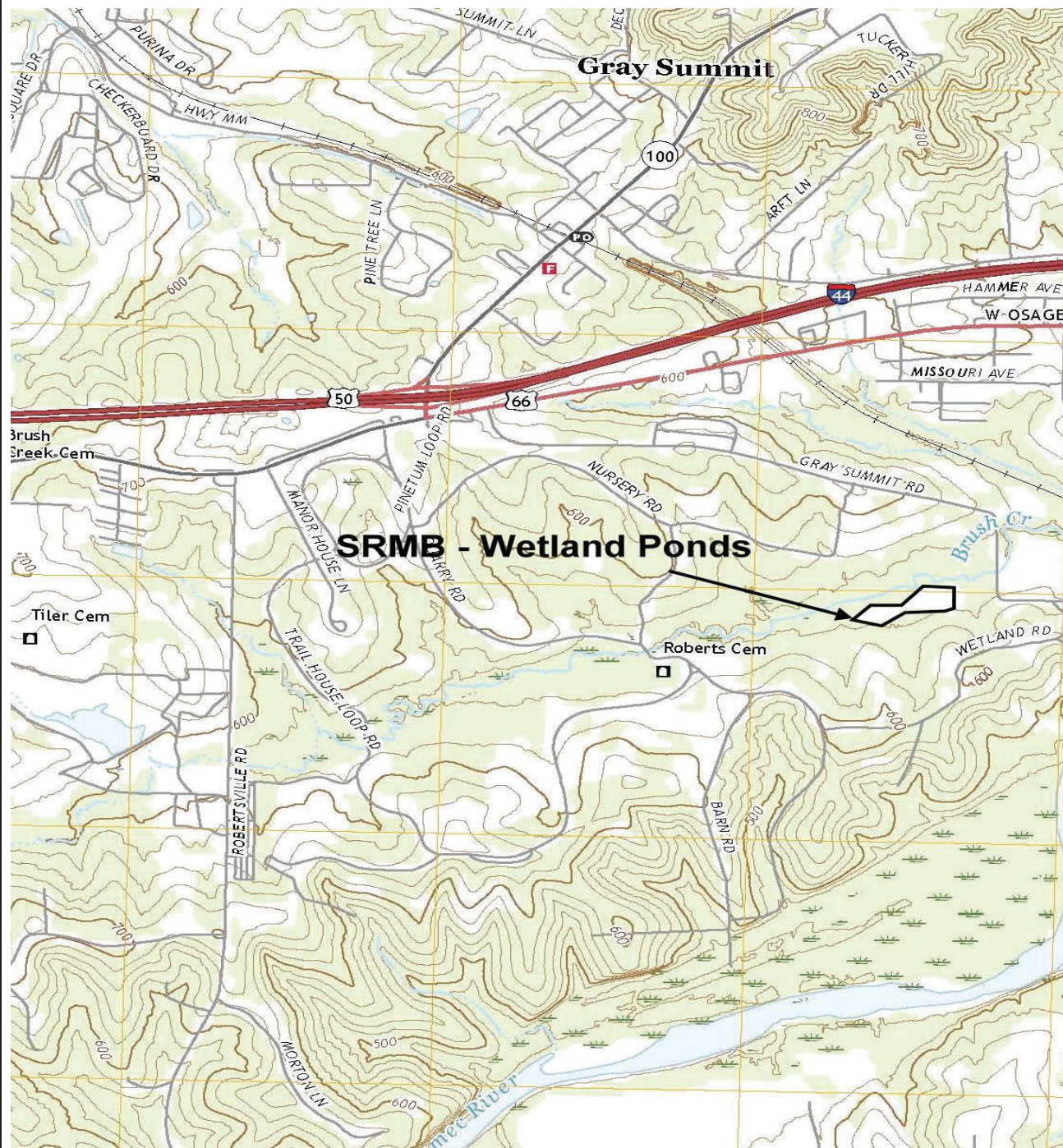
Source: USGS

Scale:  
NOT TO SCALE









## SRMB – Wetland Ponds

Franklin County, MO

Figure 1

USGS Map



On-Site Soils

Source: USGS

Scale:  
NOT TO SCALE



**SRMB - Wetland Ponds**  
Development Plan

Legend

